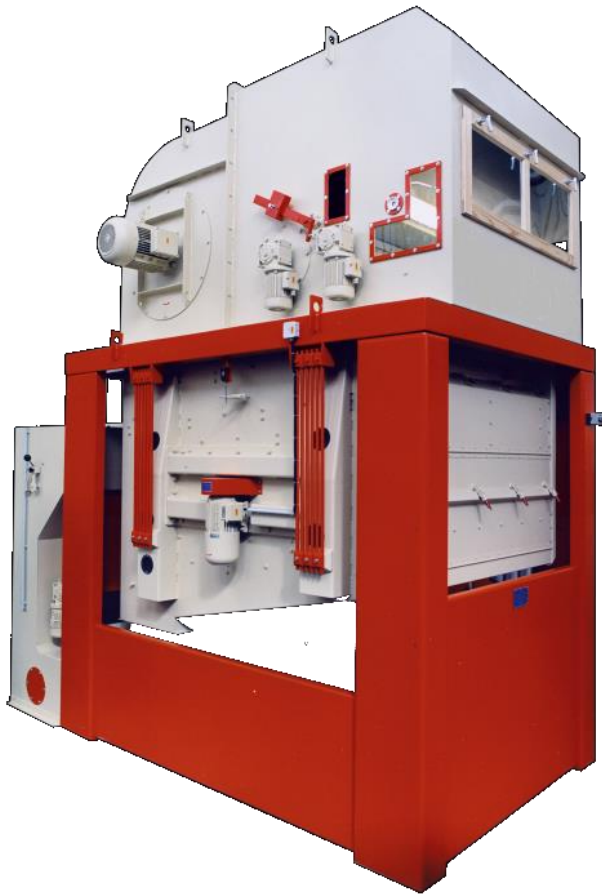


# HDT Supercleaner



**ASPIRATION  
CLEANING  
SORTING**

## **ADVANTAGES:**

- ✓ *Recirculating air*
- ✓ *Horizontally rotating sieve movement*
- ✓ *All-Steel Construction*
- ✓ *Highest performances and durability*
- ✓ *Optimal price/performance ratio*

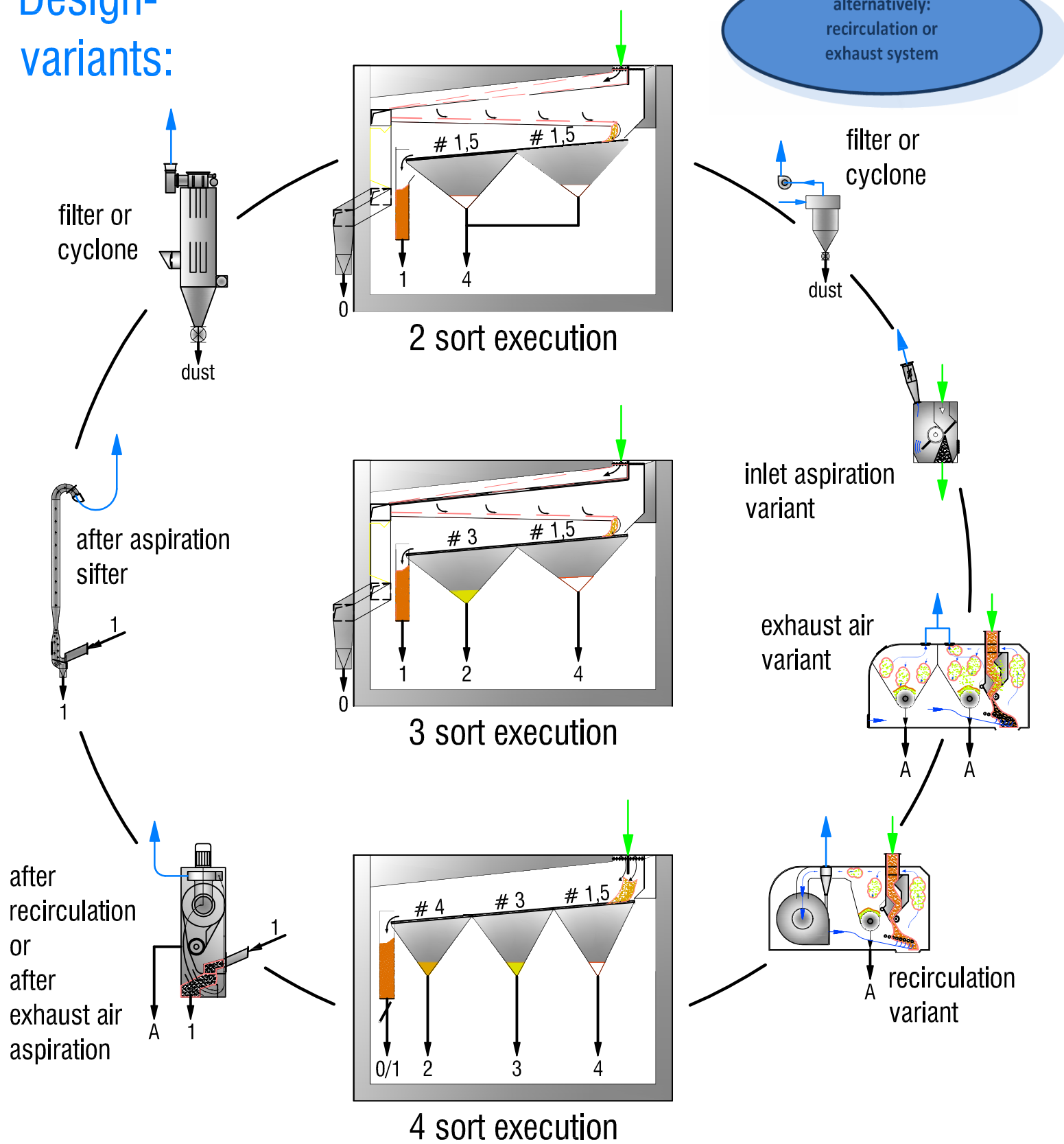


## **HDT**

MARKTSTRASSE 24-26  
A-2004 ND.-FELLABRUNN  
TEL. (0043) 2269 22 87  
FAX (0043) 2269 240 87  
E-MAIL: [office@hdt-foodmachines.at](mailto:office@hdt-foodmachines.at)  
[marketing@hdt-foodmachines.at](mailto:marketing@hdt-foodmachines.at)  
INTERNET: [www.hdt-foodmachines.at](http://www.hdt-foodmachines.at)

**Construction series  
RV, RVS, RVS Multi and RUV**

# Design-variants:



1 = 1<sup>st</sup> sort



2 = 2<sup>nd</sup> sort



3 = 3<sup>rd</sup> sort



0 = coarse sieve-rejects

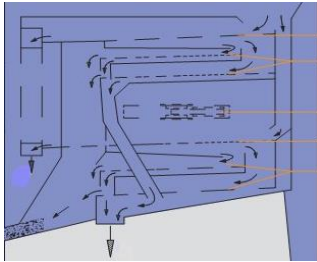


4 = sand sieve-rejects



A = light material

## Construction series: *sieves accord. to drawings* *design variants accord. to page 2*

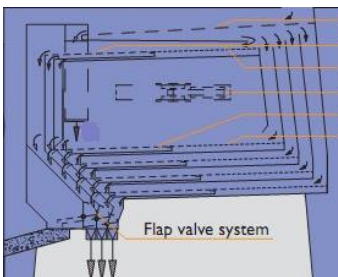
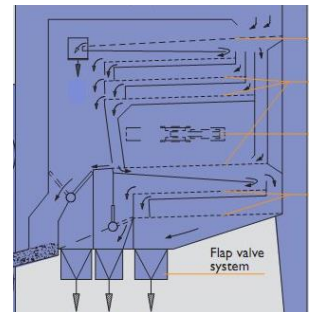


### HDT Supercleaner RV 40 – RV 60

A “high-performance cereals cleaner”, compact in design and fully developed for throughputs of up to 60 t/h and 2 sorts operation. Light particles and dust are separated out in the upper part, the vertical air sifter. Fractioning into coarse grains, granules and small grains takes place in the sieve section.

### HDT Supercleaner RVS 40 – RVS 60

A high quality pre-cleaner for 2 and 3 sorts operation, for the use with barley, brewing barley, oats, wheat, rye as well as rape, maize, peas and beans etc.. for throughputs of up to 60 t/h. It is fitted with especially large coarse grain sieves, sand sieves and grain sieves. Change-over flaps on the machine base permit numerous combinations of additional fractionings without losing performance and without a sieve change. Optionally the change-over flaps can be actuated electro-pneumatically or by way of an electric spindle motor.

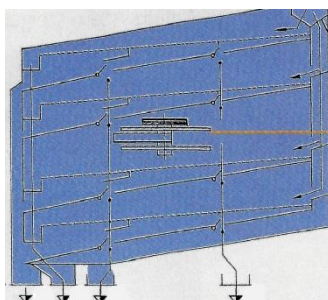
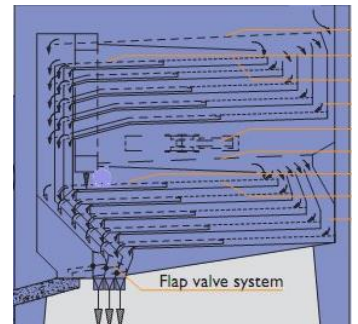


### HDT Supercleaner RVS 65 – RVS 100

A machine at the highest technical level for the 2 und 3 sorts operation, an alternative to the construction series RVS 40 and RVS 60, but with larger sieve surface and different arrangement of the sieves, achieving performances of up to 100 t/h. The grain sieve sorting performance is especially high since the smallest particles are removed early via the sand sieves. By means of change-over flaps on the machine base it can be defined if first quality granules, small grains or sand are discharged separately or if first quality granules and small grains or small grains and sand are discharged together.

### HDT Supercleaner RVS 90 – RVS 300 and RVS 90 Multi – RVS 300 Multi

A constructive development of cleaning to meet the toughest universal demands achieving throughputs of up to 300 t/h in 2 and 3 sorts operation. From the RVS 180 series upwards two sieve assemblies work in parallel and achieve an unbeatably high sorting performance due to their extremely large sieving area. The construction series RVS Multi is designed for the multiple sorts operation equipped with change-over flaps, which allow to feed either the upper sieve assembly or the lower sieve assembly or both sieve assemblies together. Since both sieve assemblies can be equipped with different screen perforations it is possible to sort 4 different crops together without a sieve change.



### HDT Supercleaner RUV 100 – RUV 600

This universal pre-cleaner is characterized by its greater flexibility and even higher throughputs of up to 600 t/h also suited for the 4 sorts operation. Generously dimensioned flow channels allow excellent performances especially by cleaning moist products and products with a high level of impurities. An aspiration of the inlet- and outlet-cascades in an exhaust air system increases the purity of the products. Complementary circulating air sifters provide the typical benefits of reduced air volumes, why less exhaust air and less filter technology is required.

# PERFORMANCE DATA

input t/h reg. wheat  $\gamma=0,75$  14% H<sub>2</sub>O

Type	2 sorts-execution	3 sorts-execution	4 sorts-execution	Number of sieves coarse-grain-sand sieves	Sieve surface m <sup>2</sup>
RV 40	40 t/h	-	-	2-4-0	9,00
RV 60	60 t/h	-	-	2-4-0	9,00
RVS 40	40 t/h	5 t/h	-	1-4-2	11,25
RVS 60	60 t/h	7 t/h	-	1-4-2	11,25
RVS 65	65 t/h	8 t/h	-	2-4-4	15,00
RVS 80	80 t/h	9 t/h	-	2-5-5	18,00
RVS 100	100 t/h	10 t/h	-	2-5-5	18,00
RVS 90	90 t/h	15 t/h	-	4-6-6	24,00
RVS 120	120 t/h	18 t/h	-	4-8-8	30,00
RVS 150	150 t/h	20 t/h	-	4-10-10	36,00
RVS 180	180 t/h	22 t/h	-	8-12-12	48,00
RVS 240	240 t/h	36 t/h	-	8-16-16	60,00
RVS 300	300 t/h	40 t/h	-	8-20-20	72,00
RUV 100	100 t/h	70 t/h	35 t/h	By the use of:	4,50
RUV 200	200 t/h	140 t/h	70 t/h	-3 coarse sieves (=2 sorts)	9,00
RUV 400	400 t/h	280 t/h	140 t/h	-2 coarse- a. 1 fine grain sieve (=3 sorts)	18,00
RUV 600	600 t/h	400 t/h	200 t/h	-1 coarse- a. 2 fine grain sieves (=4 sorts)	36,00

## Range of application of the HDT Supercleaner:

- Milling industry
- Food industry
- Breweries
- Malthouses
- Storage warehouses
- Seed industry
- Veg-oil mills
- Compound feed plants
- Biotechnolog. industry
- Chemical industry



## Application purpose of the HDT Supercleaner:

- Universal-pre-cleaner
- Main-cleaner
- Seed-cleaner
- Sorting machine
- Calibrating machine

# HDT

MARKTSTRASSE 24-26  
A-2004 ND.-FELLABRUNN  
TEL. (0043) 2269 2287  
FAX (0043) 2269 24087  
E-MAIL: office@hdt-foodmachines.at  
marketing@hdt-foodmachines.at  
INTERNET: www.hdt-foodmachines.at